

# ***DEFENDER***

**MITSUBISHI TRITON 2019 - 2023**

BULL-BAR INSTALLATION INSTRUCTION

#### STEP 1:

Unwrap kit & lay Items in front of you



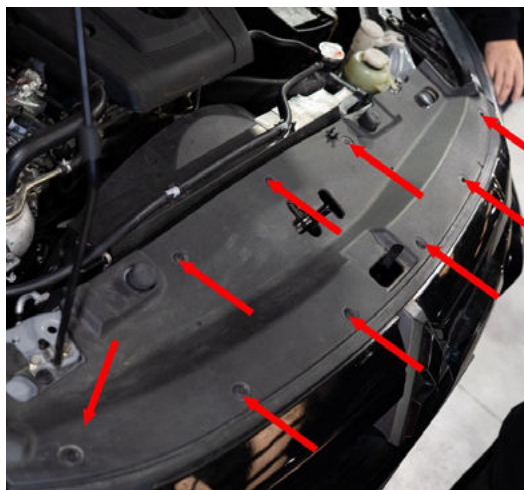
#### STEP 2:

Open bonnet



#### STEP 3:

Remove top trim piece (9 clips)



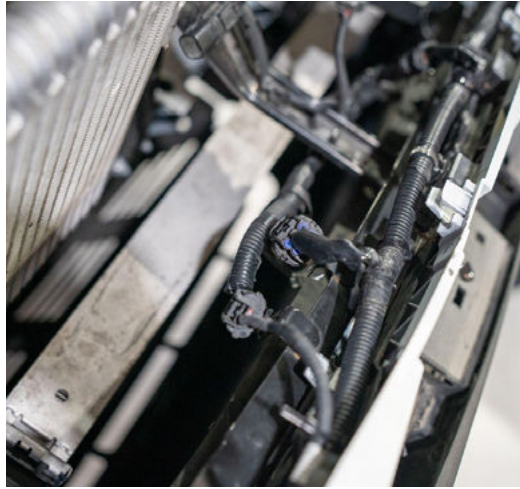
#### STEP 4:

Remove grill, 2 top clips then pops out by pulling up and out (referring to image there is one on each side)



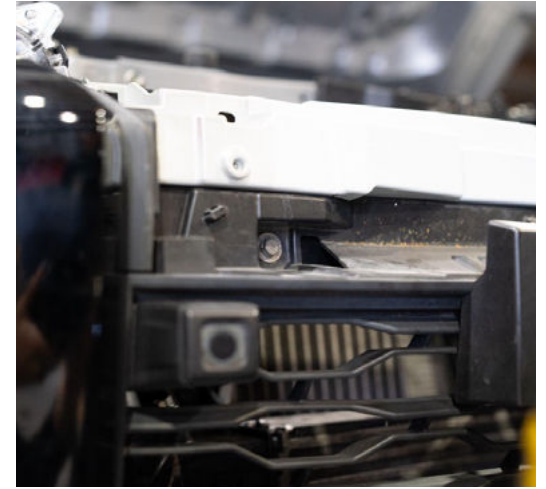
#### STEP 5:

Unplug 3 plugs that plugged into grill/bumper



#### STEP 6:

Remove 5 bolts holding bumper to bumper support



#### STEP 7:

Remove 5 bolts/screws holding fender trim, 3 towards front and 2 at back



#### STEP 8:

Remove fender flare



#### STEP 9:

Remove the black bumper trim in order to access screws and bolts for bumper



#### STEP 10:

Remove bolt that was behind this trim out the outer edge



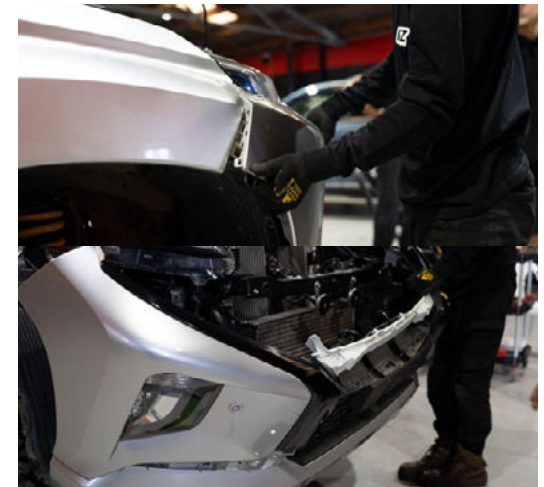
#### STEP 11:

Remove clips underneath front bumper - 2 on each side



#### STEP 12:

Remove entire front bumper



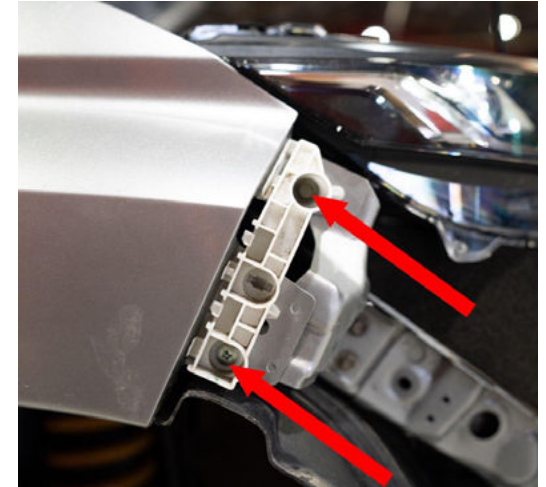
#### STEP 13:

Remove loom from the front bumper



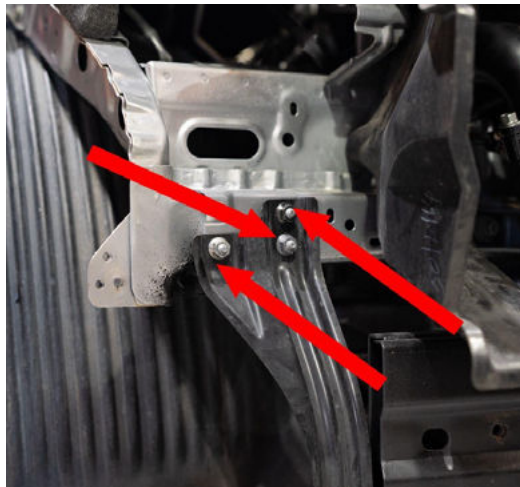
#### STEP 14:

Remove white piece on corner of fender - 1 bolt and 1 screw



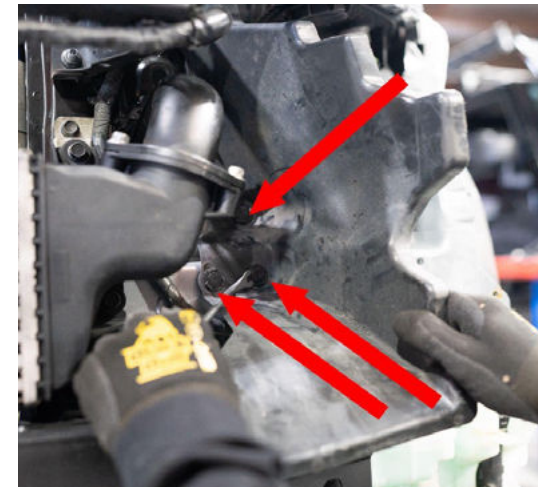
#### STEP 15:

Remove bumper bracket



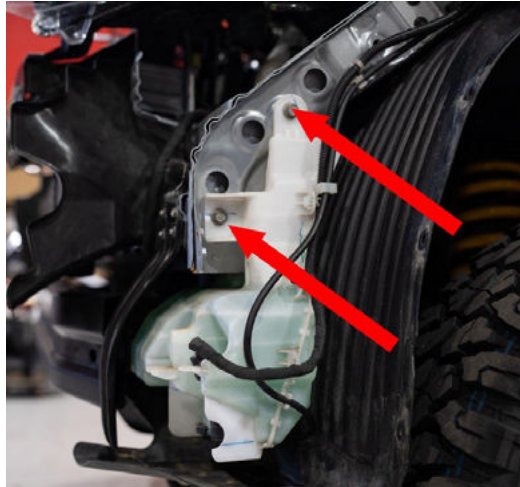
#### STEP 16:

Remove black plastic trim, 5 clips 3 uptop and 2 on the bottom - One on each side



#### STEP 17:

Remove factory washer tank  
- 2 bolts



#### STEP 18:

Remove bash plate  
- 4 Bolts, 2 at front, 2 at back



#### STEP 19:

Mount the red support mounts  
5 Long bolts with washers and  
Nuts

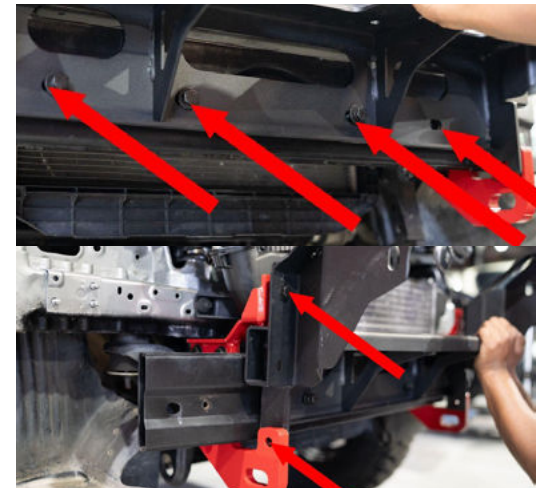
3 Shown bolts need the  
sleeves on them



#### STEP 20:

Attach the mount bar using the  
factory bolts in front.

Then 2 on the side bolting  
directly to the red mounts



#### STEP 21:

Attach black mount to new washer bottle then attach and plug newlines in



#### STEP 22:

On the bull bar pop out the sensor plugs and grind down burrs



#### STEP 23:

Take out oem lights in bullbar and replace with LEDS - 1 big and 1 small light per side



#### STEP 24:

Apply double sided tape to the sensor plugs



#### STEP 25:

Place them in the sensor holes in the bull bar



#### STEP 26:

Place the loom into the bull bar

*\*The holes for the sensors are further apart in the bull bar, so the sensor wires will need to be extended by a professional, this is not something we supply and is done at your own precautions*



#### STEP 27:

Apply pinch weld around the top edge of the bull bar



#### STEP 28:

Bolt bullbar up onto the mount. 3 on each side on the inside of the mount.



#### STEP 29:

Reconnect the bumper plugs up to the loom



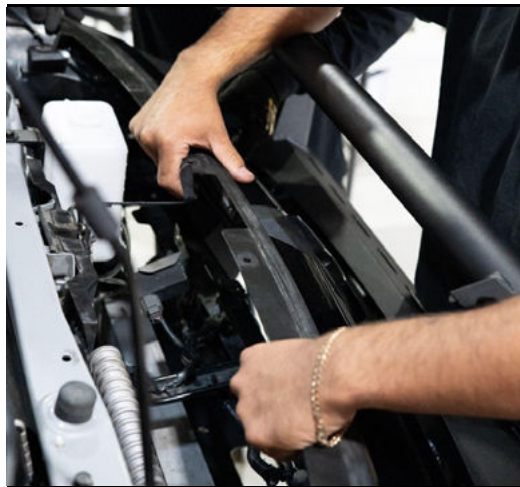
#### STEP 30:

Screw in side trim pieces, 4 screws each side



#### STEP 31:

Place front grill back in  
- 2 clips



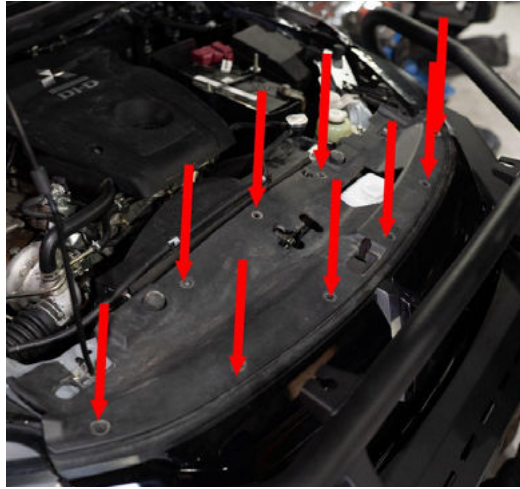
#### STEP 32:

Cut front top trim piece to suit  
new washer bottle



#### STEP 33:

Clip down the top trim piece  
- 9 clips



#### STEP 34:

Screw in bashplate  
- 5 screws  
- 3 at front, 2 at back



#### STEP 35:

Optionally paint silver parts  
black for better look



#### STEP 36:

You are done! Enjoy your new  
Defender Bull-Bar.

