

DEFENDER

TOYOTA HILUX 2015-2021

BULL-BAR INSTALLATION INSTRUCTION

STEP 1:

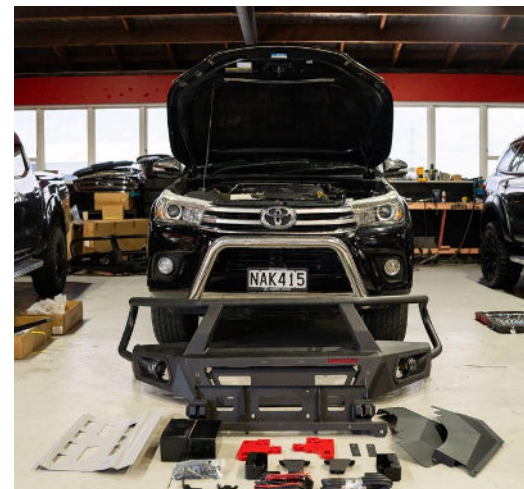
Unwrap the kit & lay the items in front of you

**There will be extra bolts leftover at the end*



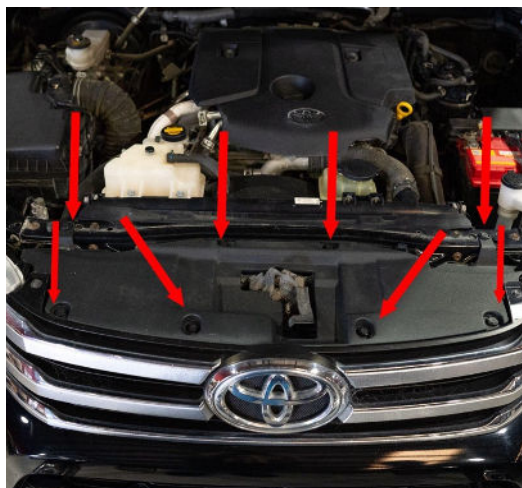
STEP 2:

Open bonnet



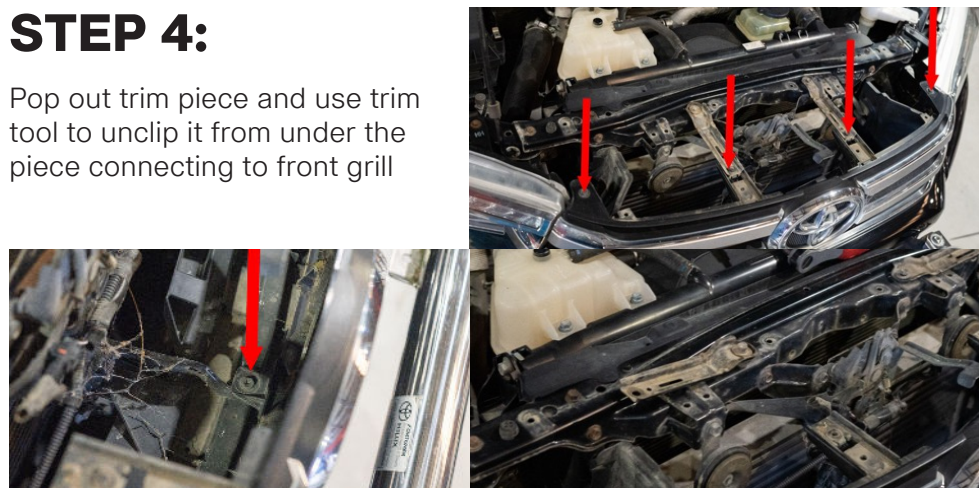
STEP 3:

Remove front plastic trim above grill, held by 8 clips



STEP 4:

Pop out trim piece and use trim tool to unclip it from under the piece connecting to front grill



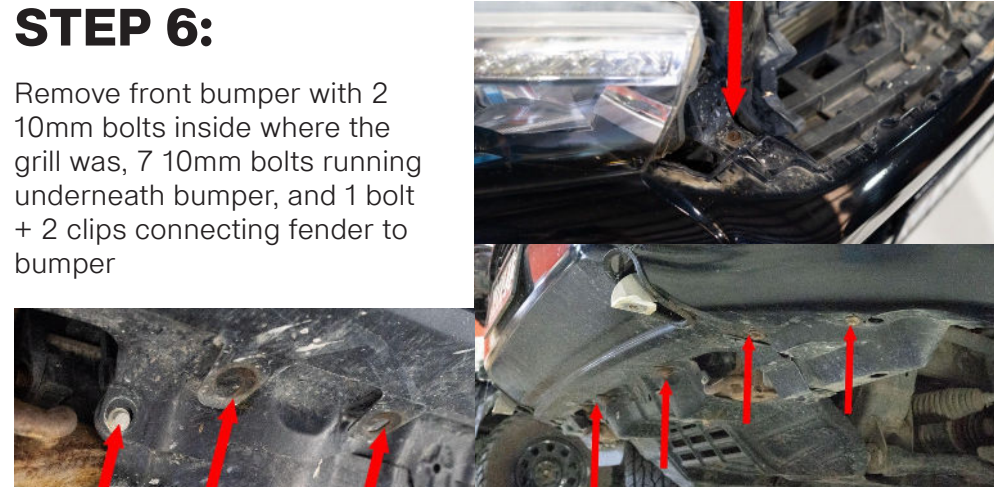
STEP 5:

Remove nudge bar with 2 bolts on each side on the front and 2 underneath the bar and front bumper.



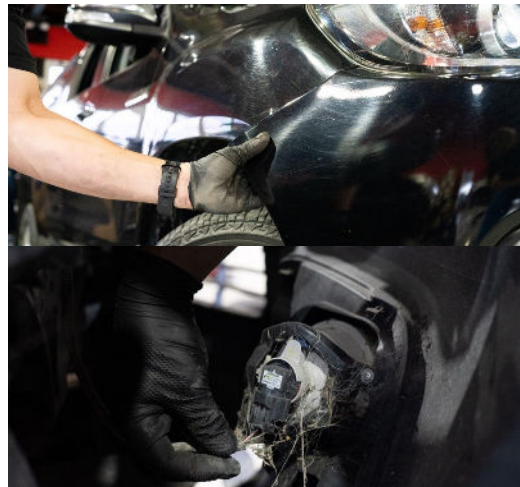
STEP 6:

Remove front bumper with 2 10mm bolts inside where the grill was, 7 10mm bolts running underneath bumper, and 1 bolt + 2 clips connecting fender to bumper



STEP 7:

Remove front bumper, starting at corners, making sure to unplug any electrical connectors (fog lights, sensors, etc)



STEP 8:

Remove bracket that runs from headlight to headlight

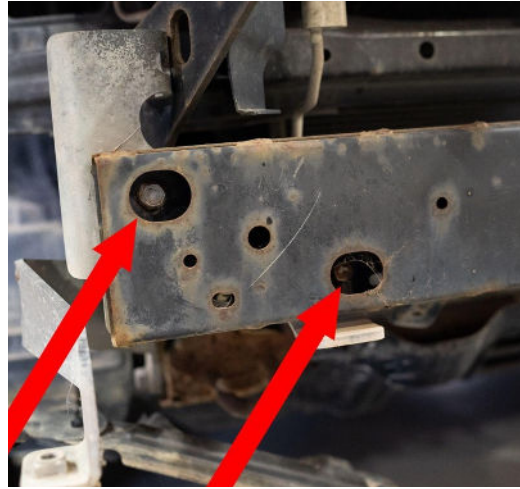
3 10mm bolts, 1 on each side and one in the middle



STEP 9:

Remove bumper support with 4 14mm bolts

**KEEP these bolts*



STEP 10:

Remove nudge bar brackets, 2 bolts per bracket, M18 socket



STEP 11:

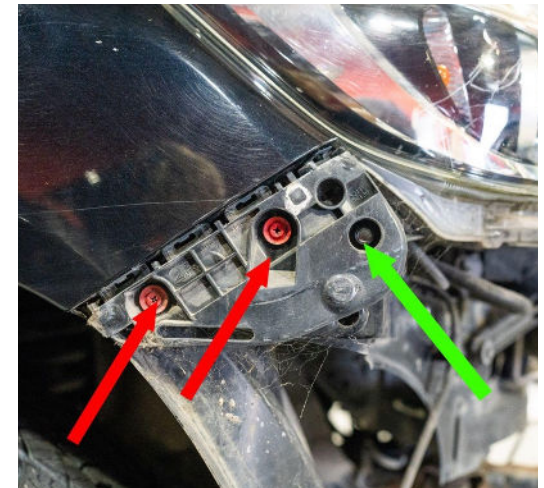
Remove plastic trim from side of headlights (just pulls out)



STEP 12:

Remove plastic trim from outer side of headlights

Re-install bolt that is closest to the front

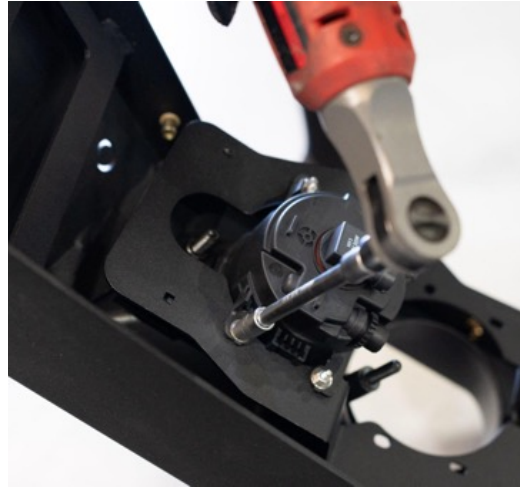


STEP 13:

Assemble bull bar, replace OEM lights with LED, M7 socket

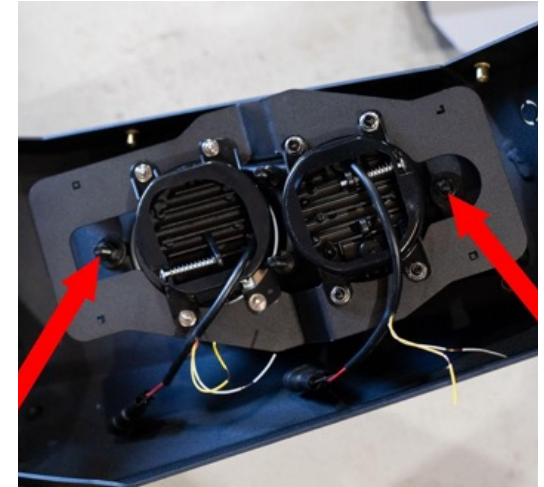
**use bolts that are preinstalled onto bull bar and use the lights from LED kit to fit the smaller light*

**Smaller light is on outer and big lights are in the middle*



STEP 14:

After placing lights in bullbar use the 2 M13 bolts to adjust and move the lights to fit the holes evenly



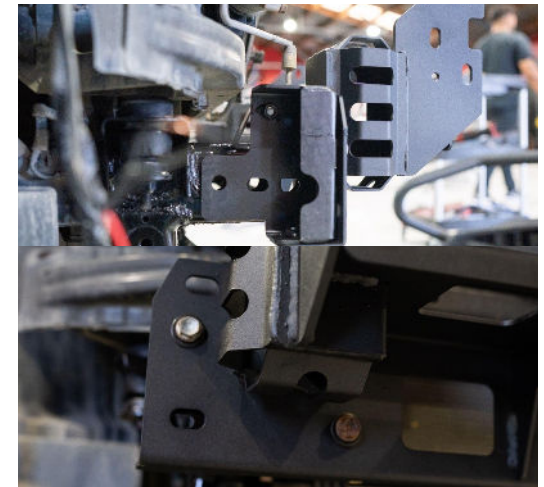
STEP 15:

Place pinch weld along inside of bullbar, cutting at corners



STEP 16:

Place brackets on the chassis and bolt up winch bar using 4 bolts that were saved from bumper support



STEP 17:

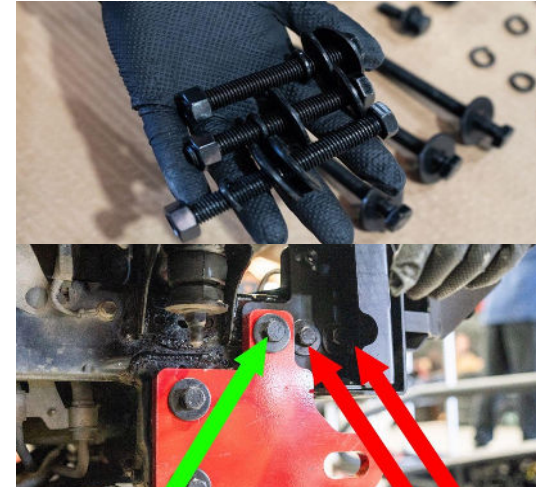
Measure gap between winch and chassis, should be **65mm** on each side



STEP 18:

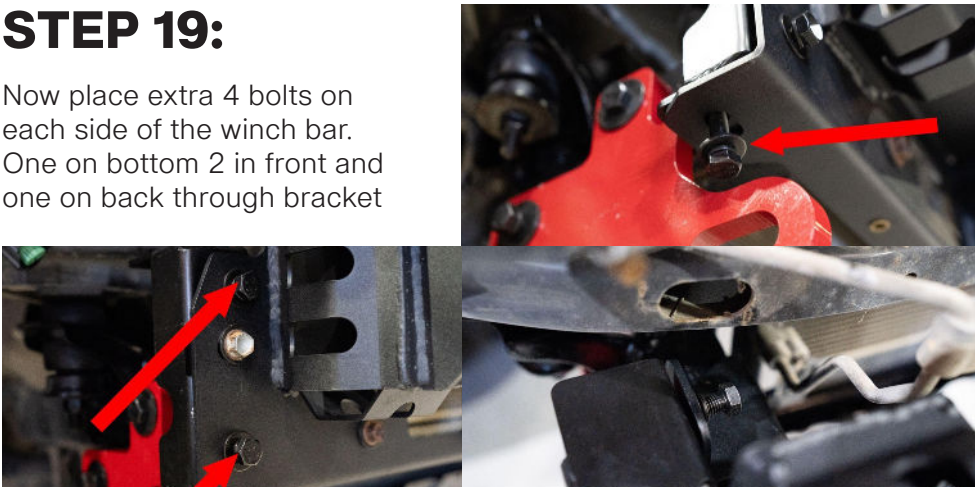
Mount tow hooks to chassis using the M12 fine thread bolts and spring washers

There are also 2 shorter and 1 long bolt, Long one goes through tow bar and 2 shorter go through bracket on chassis



STEP 19:

Now place extra 4 bolts on each side of the winch bar. One on bottom 2 in front and one on back through bracket



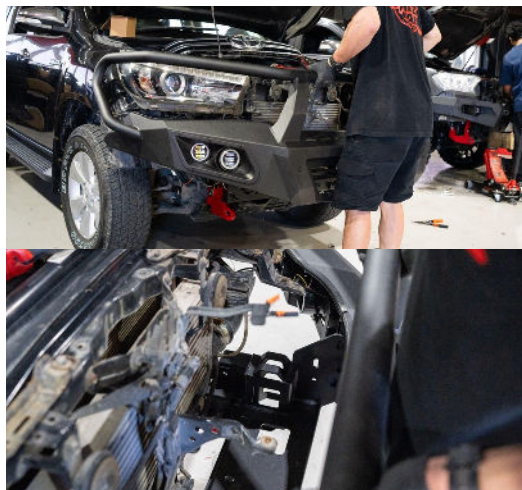
STEP 20:

Roughly cut guard liner to make bullbar fitting easier



STEP 21:

Now lift bull bar up to truck



STEP 22:

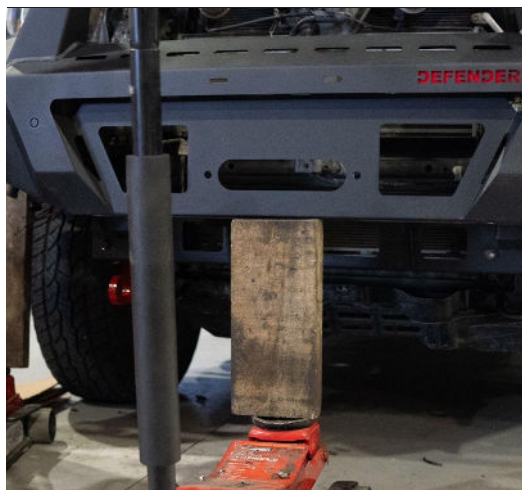
Remove bumper support, 2 bolts on each side and 2 underneath, all 15mm

The 4 bolts in front (the 2 on each sides) are kept



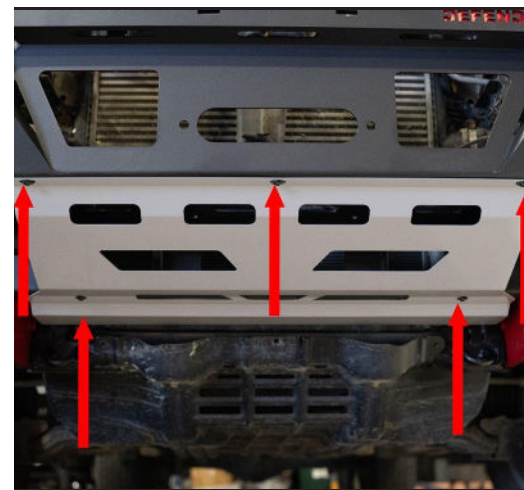
STEP 23:

Use jacks and blocks of wood to help lift bull bar up into place



STEP 24:

Attach bash plate with 5 cap screws, 2 in back and 3 in front



STEP 25:

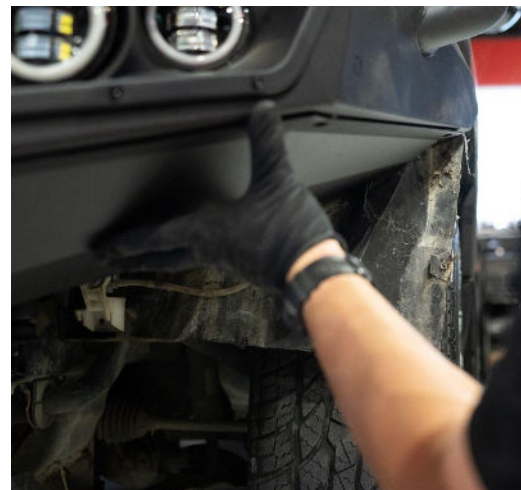
Place grill back on car

4 bolts on top and 2 hidden ones down side of grill



STEP 26:

Place side trim up to bullbar and mark rest of guard liner sticking out to cut



STEP 27:

After cutting guard liner place trim back on and screw in with 4 cap screws on each side



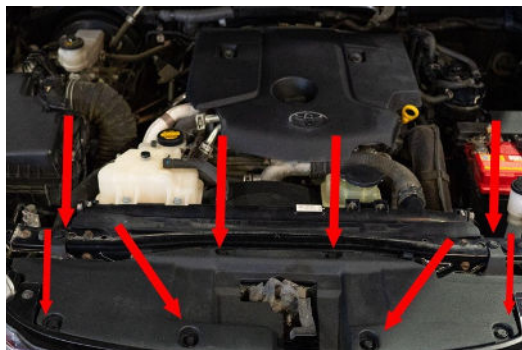
STEP 28:

Screw license plate on



STEP 29:

Place back plastic trim above grill - 8 bolts



STEP 30:

All done! Enjoy your Defender Off-Road Bull-Bar.

