

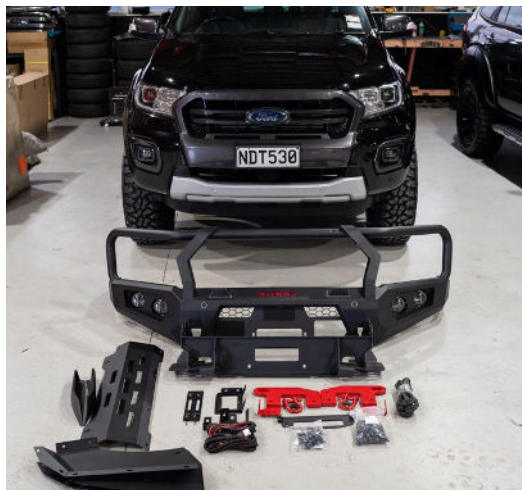
DEFENDER

FORD RANGER PX2-3 / EVEREST

BULL-BAR INSTALLATION INSTRUCTION

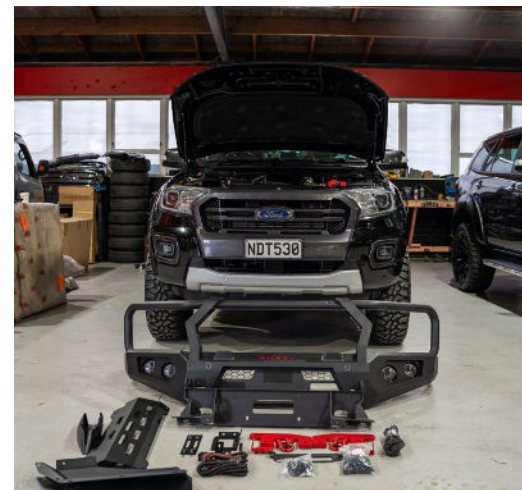
STEP 1:

Unwrap kit & lay items in front of you



STEP 2:

Open bonnet



STEP 3:

Remove clips from grill/plate under bonnet.

Flathead to remove bolts.



STEP 4:

Pop out trim piece and use trim tool to unclip from under the piece connecting to front grill



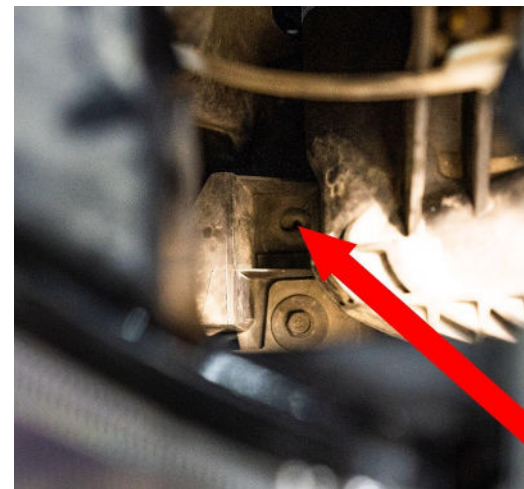
STEP 5:

Remove license plate



STEP 6:

Behind inside of headlight down low in engine bay is a bolt that needs to be removed, this is a torque screw



STEP 7:

Remove two 10mm bolts mounting on top of grill



STEP 8:

Remove 10mm bolts from below torque screws, behind and underneath headlight

(Same for both sides)



STEP 9:

Use trim tool to pop clips on the sides of grill and pull off with hands



STEP 10:

Use trim tool to remove 2 clips on each side from behind where the grill sat.



STEP 11:

Turn wheel and remove clips holding on fender liner (these clips will not be used again)

**bottom 3 are star philips and top one is a torque screw*



STEP 12:

Remove 8mm connecting fender to front bumper



STEP 13:

Turn wheel outwards and remove clip from the inside of bumper



STEP 14:

Remove 4 10mm bolts from underneath front bumper

There are more than 4 bolts some are 8mm

ONLY REMOVE 10MM BOLTS



STEP 15:

Pull back under fender trim allowing you to pull off bumper



STEP 16:

Remove wiring connecting to bumper

**some models have an extra plug on passenger for sensors so make sure all sensors and plugs are removed before pulling off bumper*



STEP 17:

Lay bumper on ground and pull out plugs for sensors

Remove all plugs from sensors before taking out wiring



STEP 18:

Take out entire wiring loom and keep to the side (will be used again)



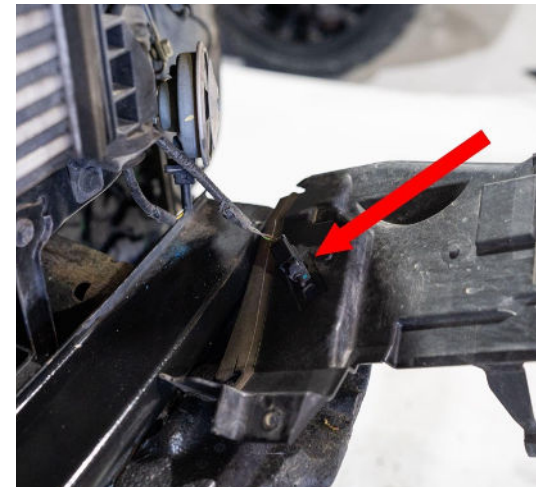
STEP 19:

Remove plastic brackets from behind bumper mounts, four 8mm bolts and 1 clip on each side



STEP 20:

When taking off passenger side bracket piece the air temp sensor needs to be unplugged



STEP 21:

Remove the pre collision assist sensor, 3 bolts 8mm

**not all models will have this*

Also take off cable held on by clip on bumper support

Lay sensor next to the car not fully unplugged



STEP 22:

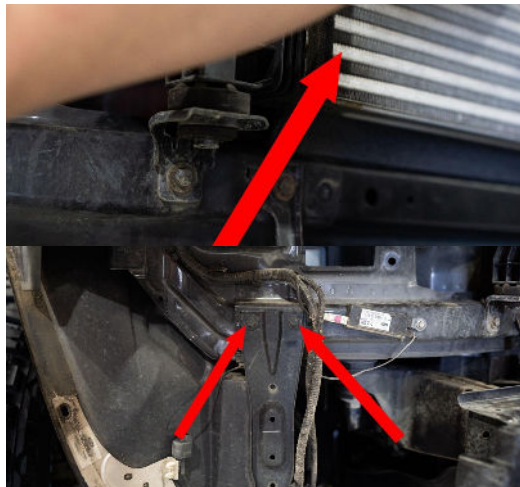
Remove bumper support, 2 bolts on each side and 2 underneath, all 15mm

The 4 bolts in front (the 2 on each side) are kept



STEP 23:

Remove brackets on side under headlights and bracket that sat behind bumper support



STEP 24:

Move air temp sensor to hole shown



STEP 25:

Relocate sensor on fender under trim to the frame

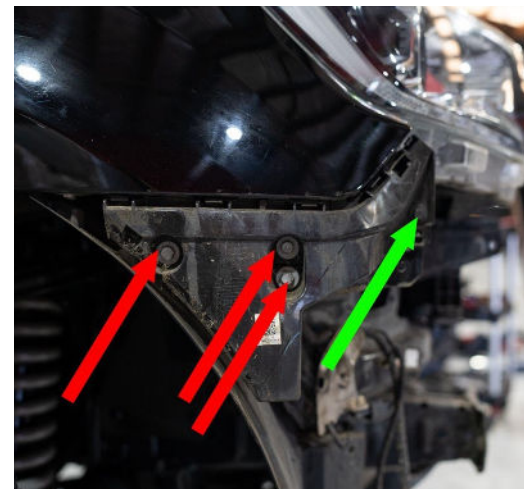


STEP 26:

Remove trim from under the outside of headlight. Four 10mm bolts.

The black bolt towards front of car is to be REINSTALLED after removing trim.

Remove red arrow bolts, green arrow is reinstalled.



STEP 27:

The nut bracket is slid in and bolted to the red tow brackets placed on the outside

**leave loose for now do not tighten up*



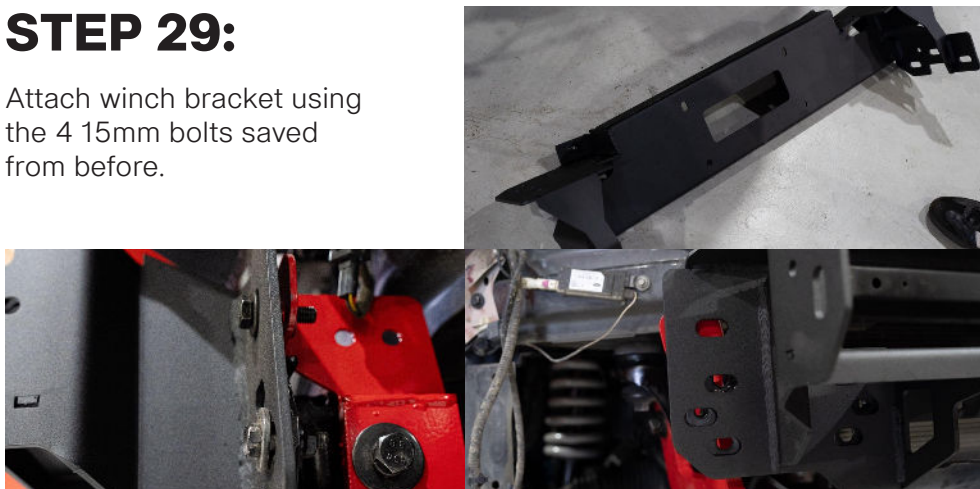
STEP 28:

Break ends off nut brackets.



STEP 29:

Attach winch bracket using the 4 15mm bolts saved from before.



STEP 30:

Tighten bolts on red tow brackets, needs M18 socket and M18 spanner.



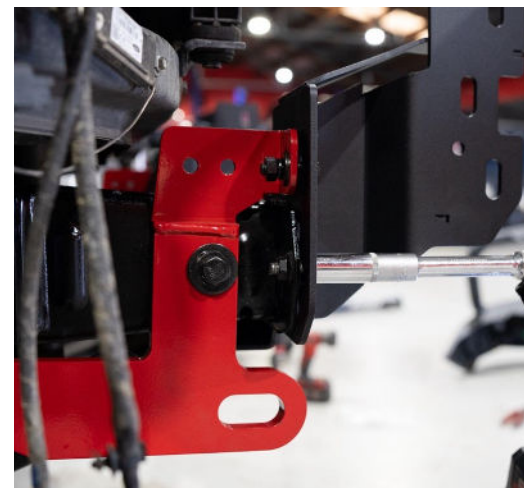
STEP 31:

Inside chassis to winch mount 77mm even gap on each side



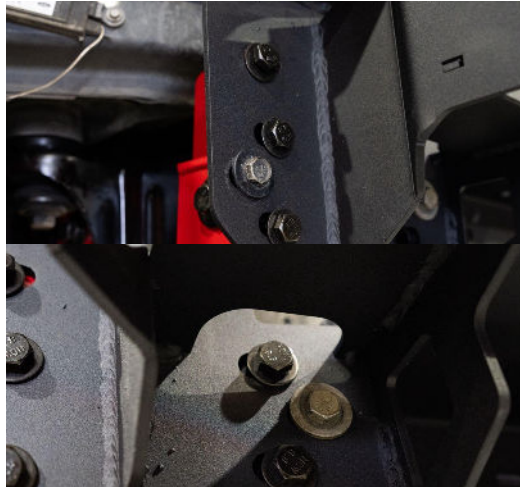
STEP 32:

Once evenly spaced tighten up.



STEP 33:

Use 4 bolts on each side to mount winch bracket.
M10 spanner and socket to tighten



STEP 34:

Bolt L brackets inbetween winch mount and bash plate
M15 socket

READ - 2 nuts in bag MUST suit fine thread 10mm bolts



STEP 35:

If swapping in LED lights remove 10mm bolts behind lights and swap in LEDS



STEP 36:

Pop out sensor plates in Bull bar

ONLY if your truck has parking sensors



STEP 37:

Apply a little bit of silicon to corners on sensor mounts



STEP 38:

Get roll on pinch weld and place along the inside of bullbar including at each corner, cutting pinchweld at corners



STEP 39:

Mount wiring bracket on plate and bolt onto bullbar

17mm socket and 6mm allen key



STEP 40:

Place bullbar on truck and bolt into winch plates, 6 m12 bolts, 3 on each side



STEP 41:

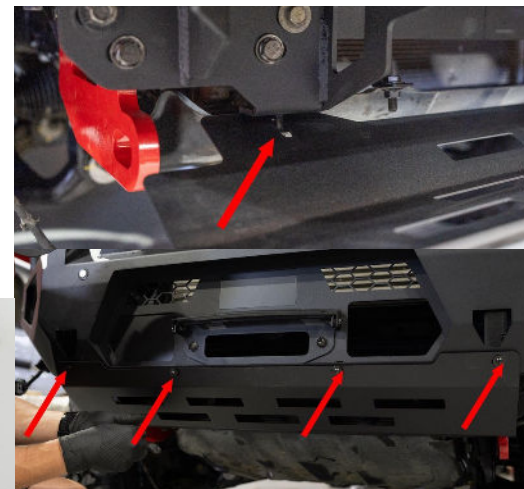
Use floor jack to lift bullbar into place if needed



STEP 42:

Install bash plate, firstly attaching in the back with 2 screws then 4 at the front

M5 allen key



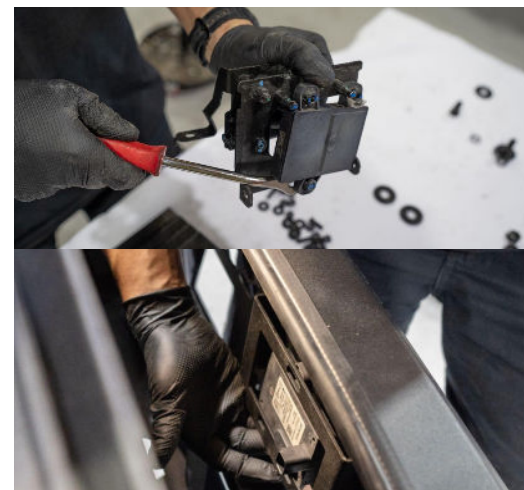
STEP 43:

Reconnect sensors and other plugs.



STEP 44:

Remove collision sensor from casing, mount onto bracket behind bull bar in the middle



STEP 49:

Loosen bolts on headlights to allow movement in headlights to make grill installation easier

Also removing the letter "D" from grill makes installation easier



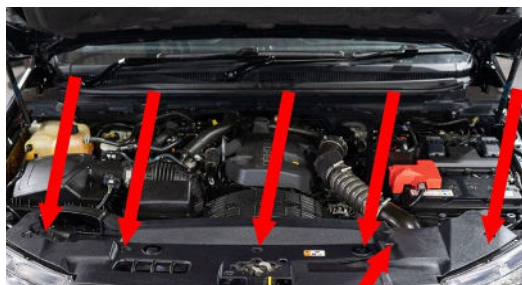
STEP 50:

Tighten headlights once aligned, replace letter "D" and don't forget to put back torque screw removed in step 6



STEP 51:

Place back engine bay trim with plastic clips



STEP 52:

Reattach number plate

