

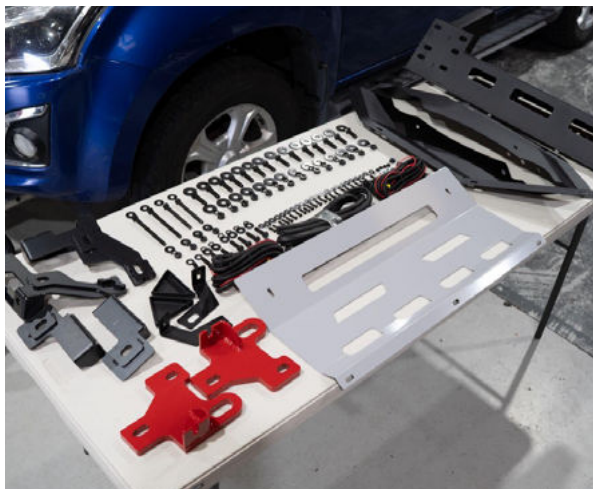
DEFENDER

ISUZU D-MAX 2016 - 2020

BULL-BAR INSTALLATION INSTRUCTION

STEP 1:

Unwrap kit & lay Items in front of you



STEP 2:

Open bonnet



STEP 3:

Remove front trim and grill
4 clips and screw in front
middle



STEP 4:

Remove 4 clips that were below
grill on bumper and 2 behind
bumper



STEP 5:

Remove 1 clip on each side under fender where bumper joins



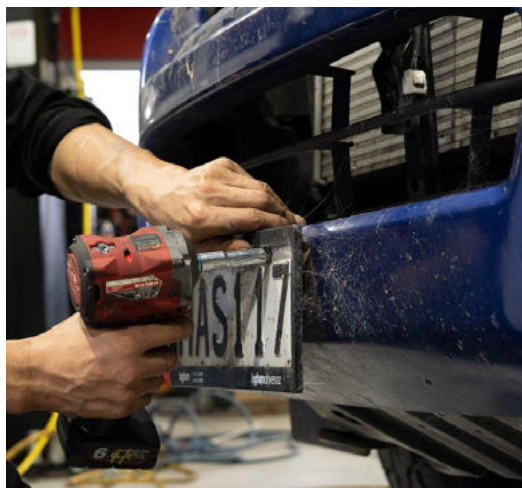
STEP 6:

Remove factory bull bar via bolts under bumper



STEP 7:

Remove license plate



STEP 8:

Remove clips under bumper
1 on each side on front and 1 on
each side behind mudflap



STEP 9:

Remove bolt behind mudflap



STEP 10:

Fully remove bumper
(remember to disconnect wiring
for lights)



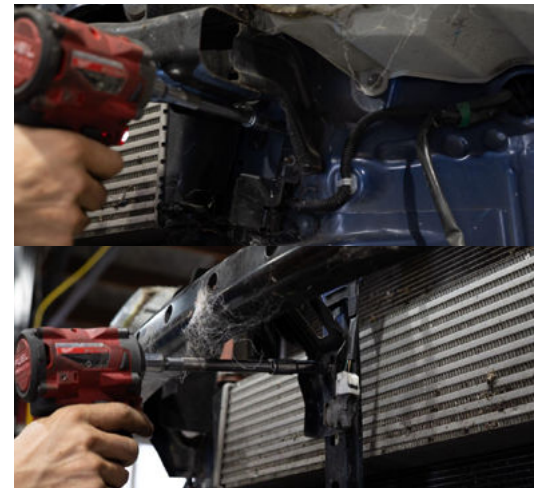
STEP 11:

Remove plastic behind bumper
(clips)



STEP 12:

Remove bumper support
2 bolts each side + 2 in middle
Also remove sensor connectors



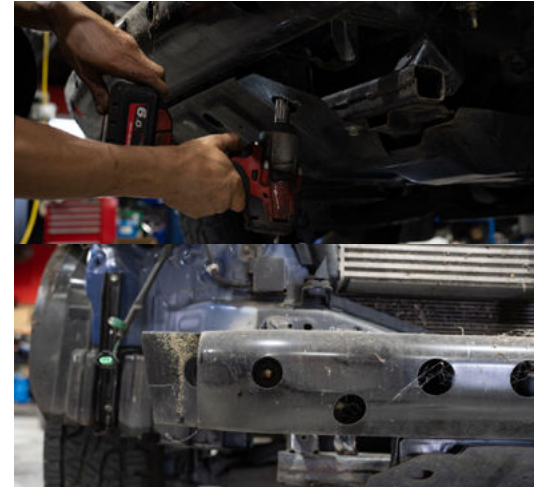
STEP 13:

Place sensor covers back



STEP 14:

Remove front lower support bar
2 bolts each side and 3 across
bottom(through bash plate



STEP 15:

Remove these brackets



STEP 16:

Remove oem bash plate
2 remaining bolts underneath



STEP 17:

Remove white side pieces
1 bolt 1 screw then pops off



STEP 18:

Remove brackets on sides
connected to fender trim
2 bolts



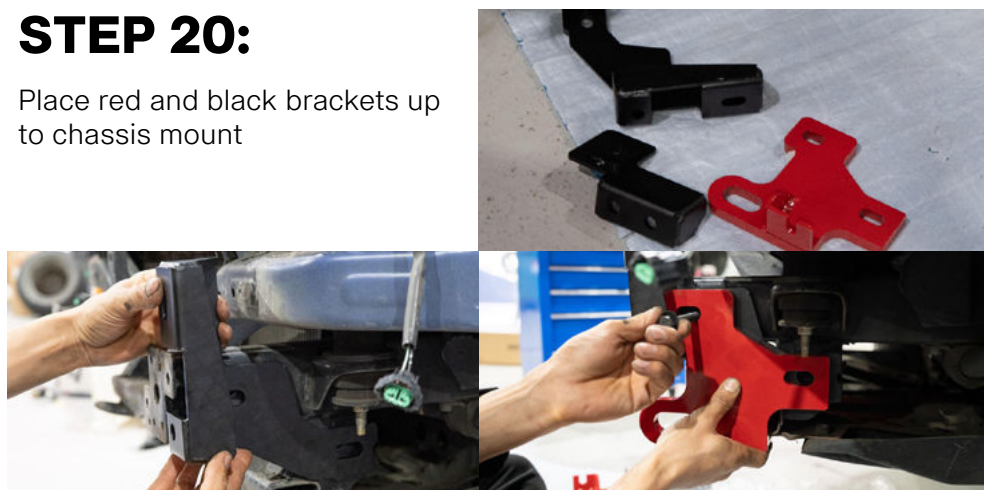
STEP 19:

Cut across trim



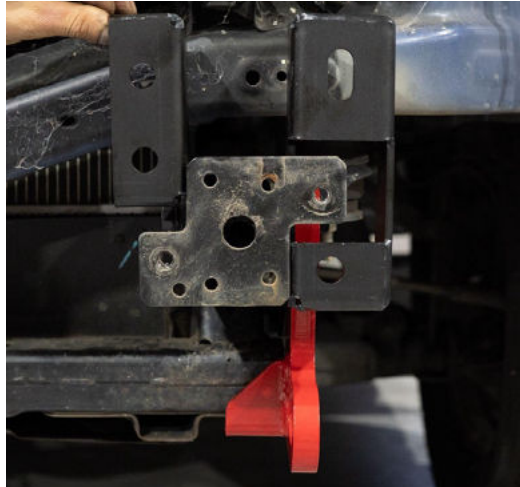
STEP 20:

Place red and black brackets up
to chassis mount



STEP 21:

Place 1 bolt in and the 2nd black piece connects on the inside



STEP 22:

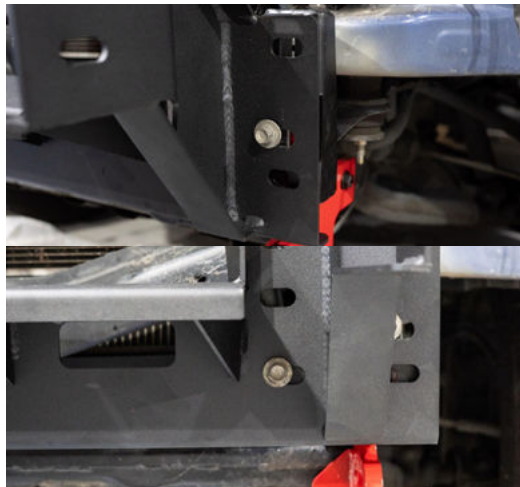
Fit remaining bolts
3 in total 2 on side and one on bottom

The bolt on bottom has the bigger wider thread



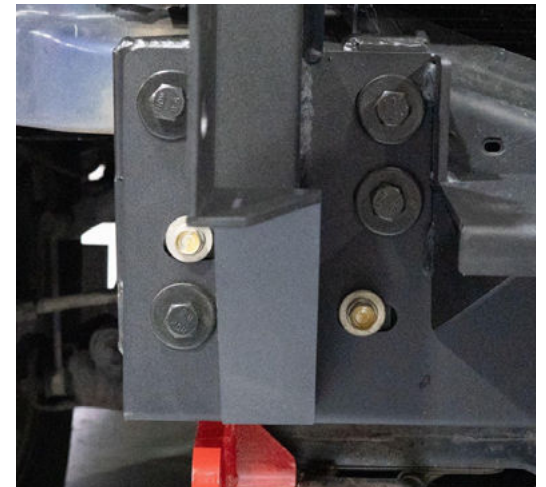
STEP 23:

Place bull bar mount up to mounts and place 2 oem bolts back in on each side one on outside and one inside



STEP 24:

Then add 4 bolts on face on each side



STEP 25:

Replace lights in bull bar with LED



STEP 26:

Apply pinch weld to the top of the bullbar



STEP 27:

Attach the triangle plates onto the bull bar
These sit below the headlights



STEP 28:

Lift bull bar up onto truck



STEP 29:

Bolt onto mounts



STEP 30:

Attach side plates
5 screws each side



STEP 31:

Attach bash plate
5 screws, 3 at front, 2 at rear



STEP 32:

Place grill and top trim back in

